



Capability Statement

2025

Contents



Table of Contents

2

Intent

3

Our Services

4

Management Structure

5

Our Advantages

5

Testimonials

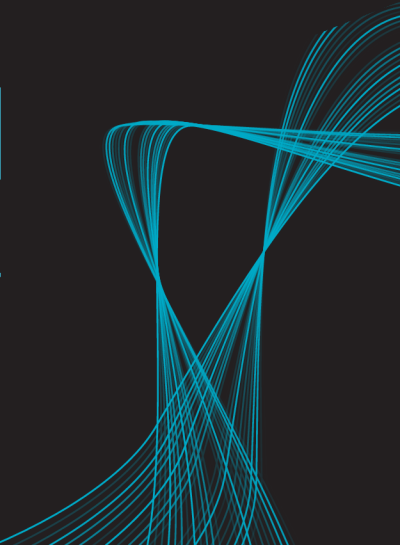
6

Staying Up To Date

7

Contact Us

8





Intent



This Business Capability Statement highlights our organisation's experience and capacity to service our customers.



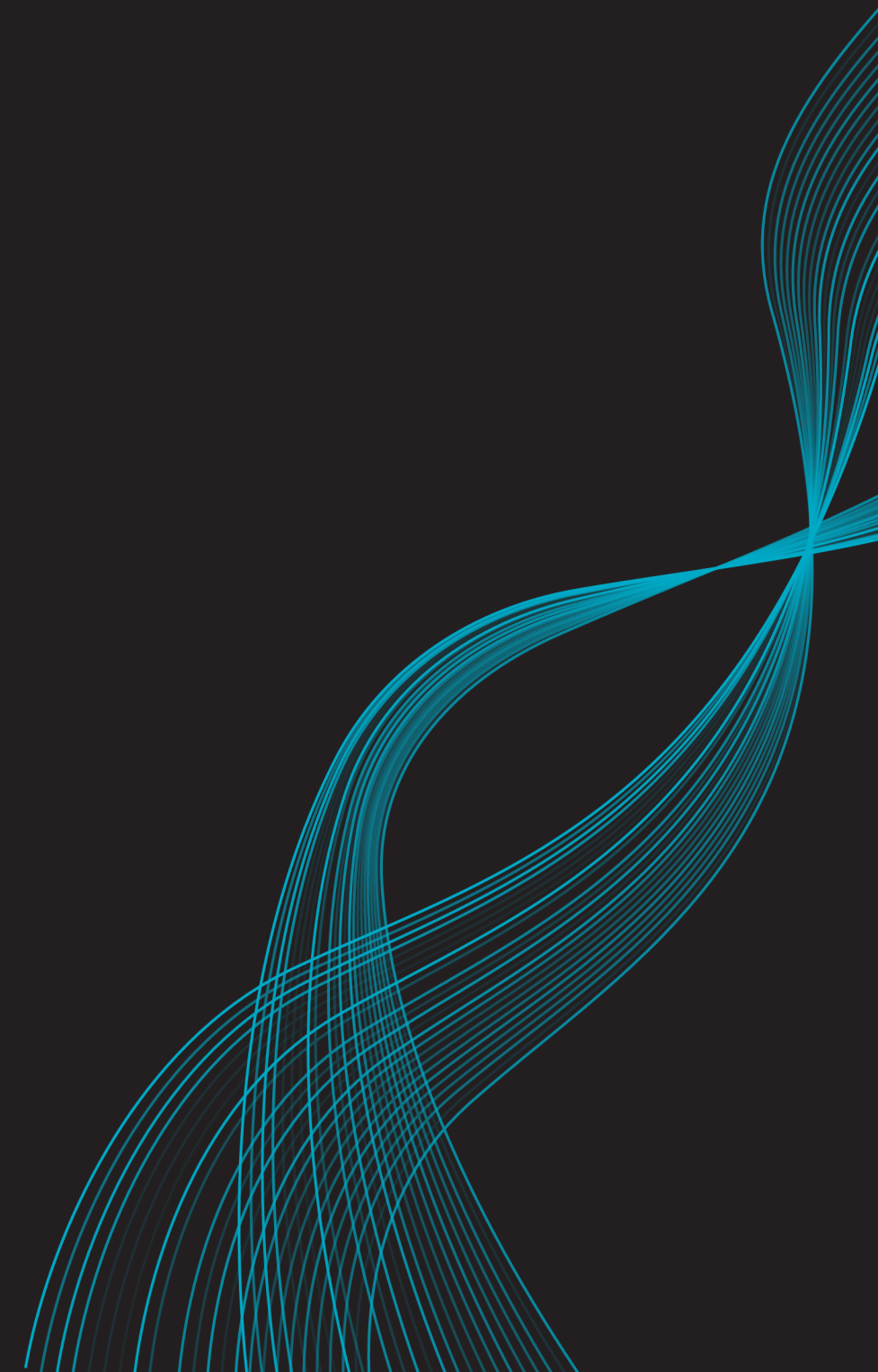
Vision

To set the standard for excellence in electrical solutions, consistently delivering superior quality work that earns deep client trust and fosters enduring partnerships



Mission

It is the mission of Adaptive Fire and Electrical to be the trusted electrical partner our clients consistently choose, providing exceptional quality workmanship and innovative solutions for every electrical project big or small.



Our Services

Adaptive Fire and Electrical are very focused on producing a variety of services to meet the needs of our customers. Our products and services include but are not limited to:

- Electrical Fault Finding and Repairs
- Power and Lighting Installation, Repairs and Upgrades
- EV Charger Advice and Installation
- Generator Inlet Sockets
- Data point installation
- Aerial point installation
- Switchboard Repairs and Upgrades
- Smoke Alarm Maintenance and Replacements
- Ceiling Fans Installations and Upgrades
- Security Camera and Video Doorbell Installations
- Heat Strip Installation
- LED Lighting
- Smart Home Automation
- Mains Upgrades
- Electrical Safety Checks & Inspections



Management Structure

Adaptive Fire and Electrical Pty Ltd currently operates with a streamlined management structure. Douglas, as the sole Director, is responsible for all strategic planning, operational oversight, business development, and financial management. This role ensures direct accountability and agile decision-making.

The team also includes a proactive A-Grade electrician and a dedicated apprentice. The A-Grade electrician provides direct supervision and guidance, while the apprentice supports daily operations and is actively undergoing training and development. This structure allows for focused leadership and efficient workflow, while also fostering the growth of future talent within the company.

Adaptive Fire and Electricals' current focus includes accelerated growth, with strategic plans to expand our team by bringing on additional skilled electricians and apprentices. This expansion will significantly increase our capacity, allowing us to take on more projects and further solidify our position as the trusted electrical partner of choice in the Pakenham area and beyond.



Established in 2021



Our Advantages



Prompt, Reliable and Professional Service



Exceptional Attention to Detail



Unwavering Commitment to Safety



Meticulous Workmanship & Cleanliness



Premium Components and Lasting Solutions



Long Term Partnership and Ongoing Support

Testimonials

Douglas is an exceptionally skilled electrician who consistently provides timely, reliable, and professional service.

I have had the pleasure of using his services on multiple occasions, from small jobs to large projects and each time, I have been thoroughly impressed with the quality and craftsmanship of his work.

His attention to detail and commitment to exceeding expectations sets him apart from all the others.

I highly recommend his services; his work speaks for itself & you will not be disappointed! Please do give him a call!!

-Copiam International

I have had Douglas & Adaptive Fire and Electrical install a lot of electrical work over the last five years. Highly recommend them as they are always thorough and do a great job.

-Mark Layton

Amazing electrician, always on time and reliable and professional service.

We have used their services multiple times and have always been completely satisfied with the work and quality. Cheers guys!

-Priya Agarwal

Fantastic service. Can't thank Douglas enough for his help.

He arrived promptly and was so easy to deal with. Would definitely recommend him.

-Jenny and Roy Mackay

Excellent service! Douglas from Adaptive Fire and Electrical was fantastic!

Very responsive, friendly, and very knowledgeable. He was thorough in his investigations, and took the time to explain everything as he went.

He understood the urgency of the issue and handled it efficiently. I highly recommend Douglas and will definitely use this company again in the future!

-Tania Barker

Staying Up To Date



Master Electricians Member

Master Electricians are a Peak Industry Body, that provide us with technical support and updates to legislation so we are always kept up to date. Along with access to the latest Australian standards, technical resources and advisory bulletins.



Simpro Job Management Software

We use SimPRO job management software, that handles everything from quoting, scheduling, project management through to invoicing and customer communication. We keep a thorough history of jobs completed so we can access past history with ease.



Continued Professional Development and Training

To guarantee our clients always receive the most advanced and compliant solutions, our team undergoes continuous professional development. This includes dedicated training on new technologies, energy efficiency advancements, and enhanced safety protocols.

Contact Us



Phone

1300 437 917

Email

office@adaptivefireandelectrical.com.au

Website

www.adaptivefireandelectrical.com.au

Address

13 Davidson Street, Pakenham, Victoria, 3810

Australian Business Number

44 354 219 940

Registered Electrical Contractor Number

32310



ADAPTIVE

FIRE AND ELECTRICAL

